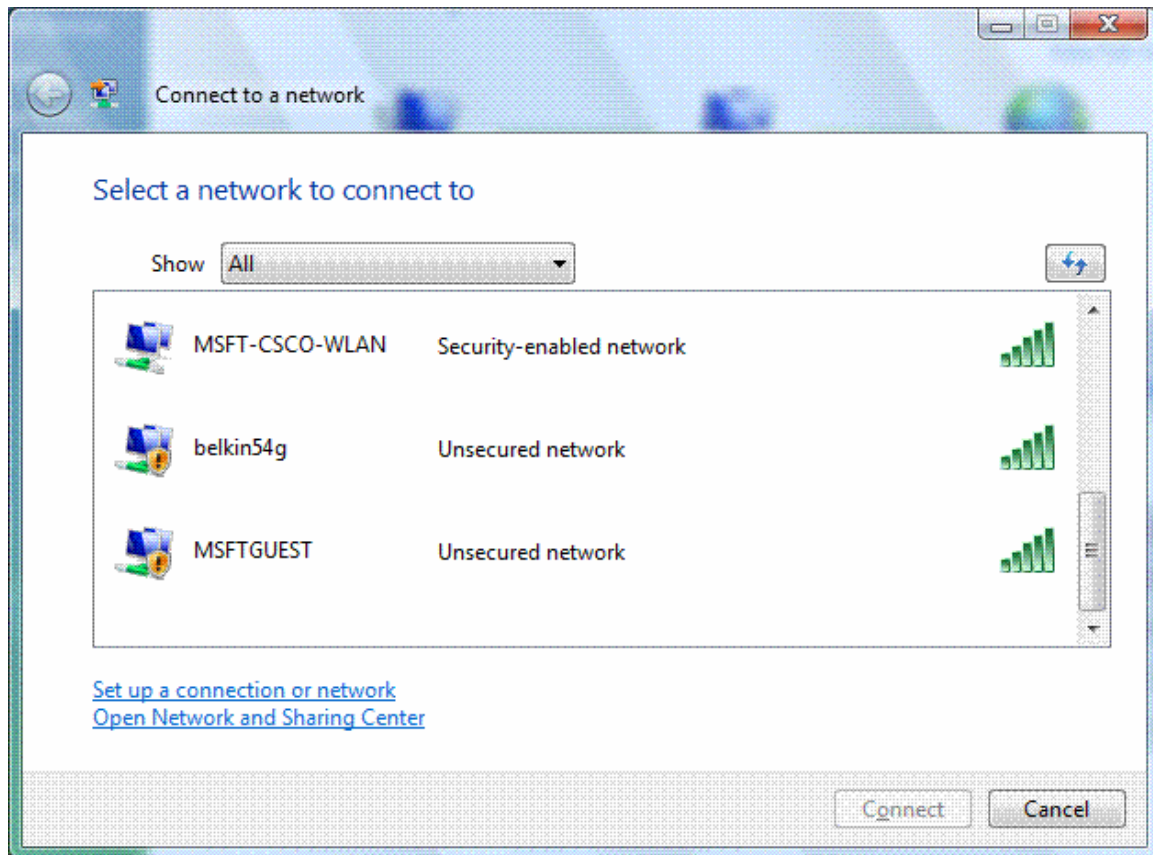


## Connecting to the Wilson Library wireless network Windows Vista

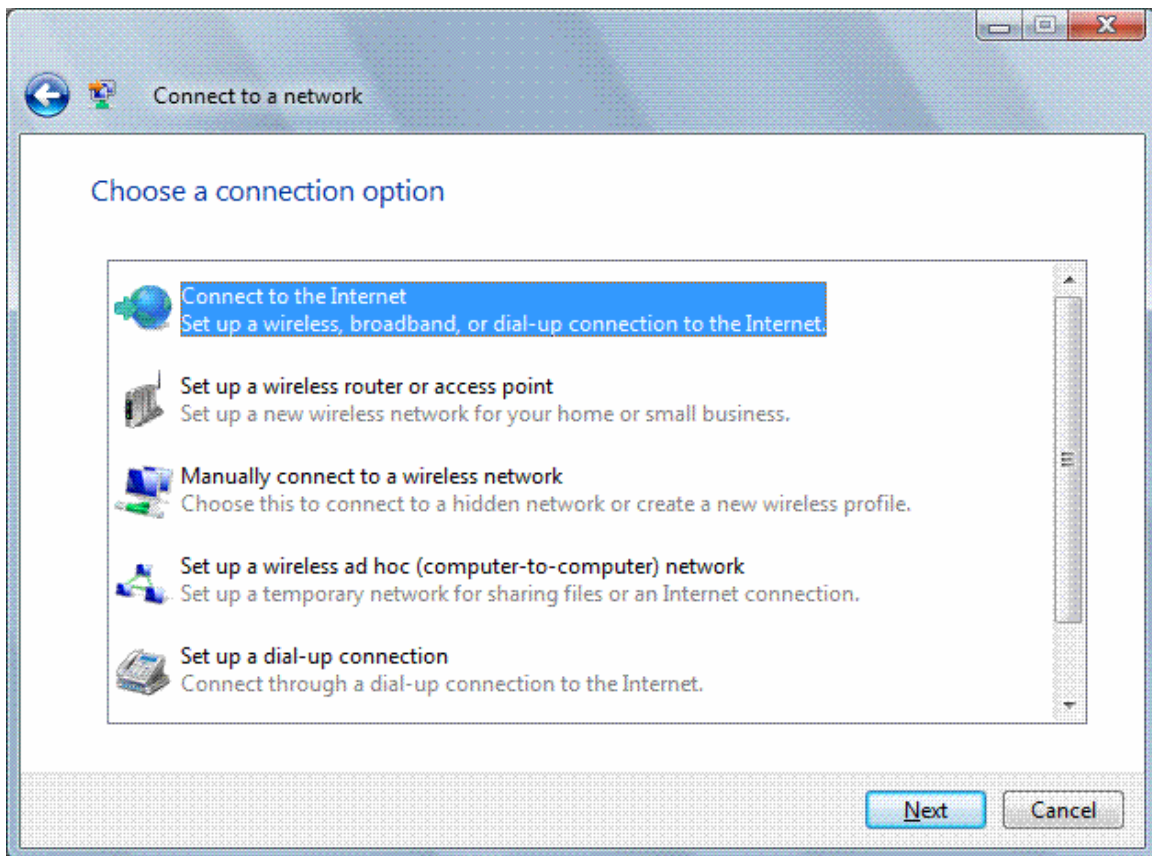
From the Windows Vista desktop:

1. Click **Start**, then **Connect to** to reveal the following dialog box;

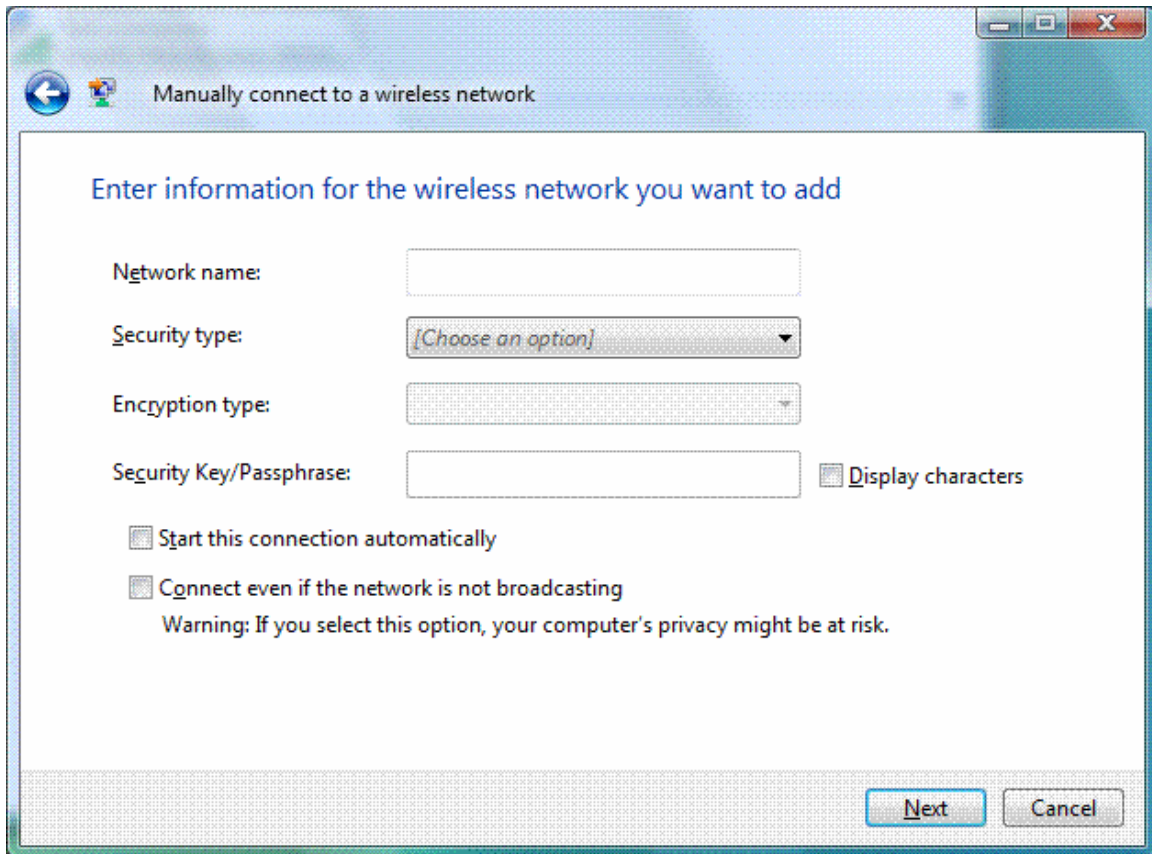


[**Note** If the **Manually connect to a wireless network** option is not present in the **Choose a connection option** dialog box, make sure that your wireless network adapter appears in the Network Connections folder as a wireless connection and is enabled. If your wireless network adapter appears in the Network Connections folder as a wired connection, ensure that you have installed the latest driver for your adapter that is designed for Windows Vista.]

2. Click **Set up connection or network** (bottom left corner of the dialog box);



3. Double click **Manually connect to a wireless network**;

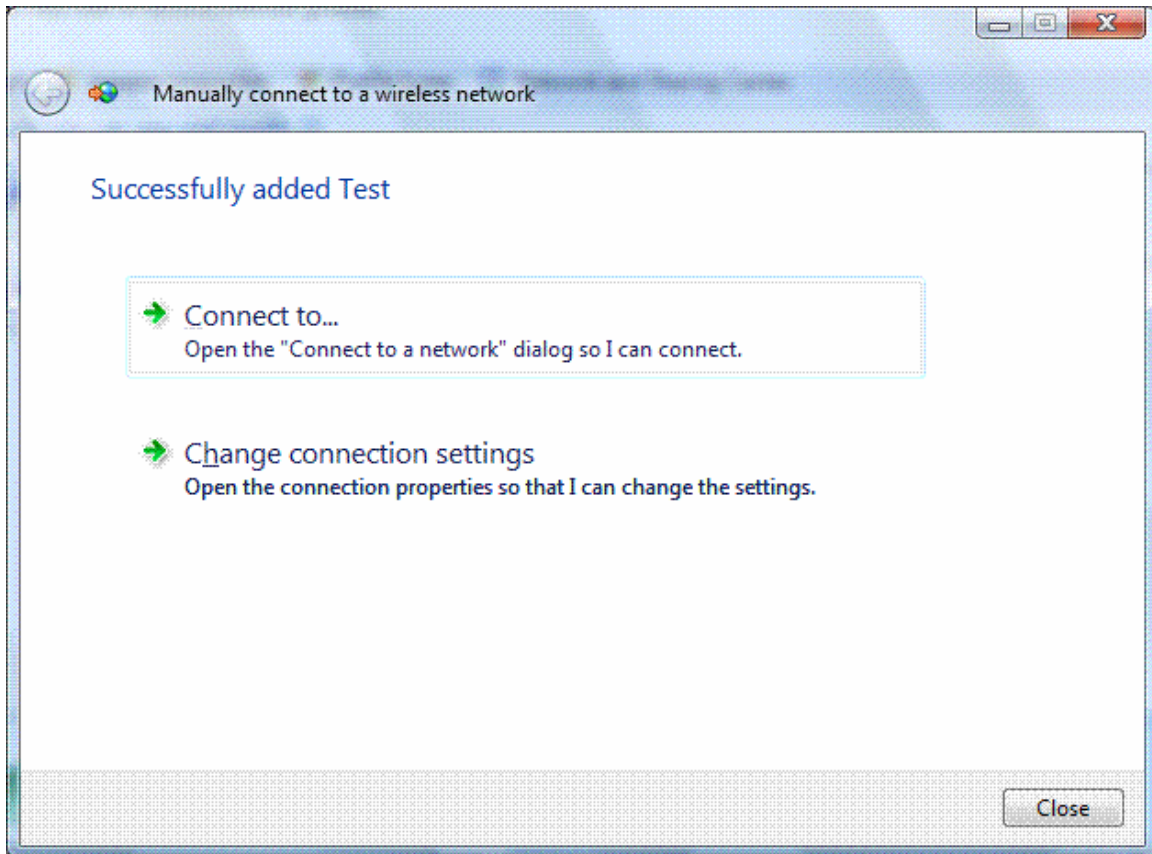


4. Enter the wireless network information as follows:

Network name:	<b>ulvleopards\x01</b>
Security type:	<b>No authentication (Open)</b>
Encryption type:	none (default option)
Security Key/Passphrase:	(leave blank)

And select **both** options: **Start this connection automatically**  
**Connect even if the network is not broadcasting**

Then click **Next**;



5. Double click on **Connect to...** to connect to the network.

The wireless network should appear as connected.

*Alternate instructions for tech-savvy users or library staff:*

Click **Start**

**Right click** on **Network**

Select on **Properties**

Click on **Set up a connection or network**

Choose **Manually connect to a wireless network**

Enter the following network information:

Network name:	<b>ulvleopards\x01</b>
Security type:	<b>No authentication (Open)</b>
Encryption type:	(none is the default)
Security Key/Passphrase:	(leave blank)

And select both options: **Start this connection automatically**  
**Connect even if the network is not broadcasting**

Click **Next**

Select **Connect to...**